

News Release



PermaLath® 1000 gains IBC and IRC code recognition

BASF® Wall Systems innovative product receives recognition in an evaluation report from the International Code Council

JACKSONVILLE, FL, June 23, 2008 – BASF® Wall Systems today announced that the International Code Council (ICC) Evaluation Services has issued ESR-2429, which recognizes PermaLath® 1000 glass fiber lath under the ICC-ES Acceptance Criteria AC 275 for *Glass Fiber Lath Used in Exterior Cementitious Wall Coatings or Exterior Cement Plaster (Stucco)*. The report confirms compliance with the 2006 International Building Code (IBC) and the 2006 International Residential Code (IRC).

ESR-2429 recognizes PermaLath 1000 for use in combustible, non-combustible, and fire resistive construction with ASTM C 926 (three coat) stucco, as well as with BASF Wall Systems' Stuccobase products. Systems with PermaLath 1000 are recognized with wood framing, and minimum 20-gauge steel framing along with sheathings that include OSB, plywood, ASTM C 79 paper-faced gypsum and ASTM C 1177 glass mat-faced gypsum.

PermaLath 1000 is the second product in the BASF family of non-metallic laths. PermaLath was introduced in 2005 as an alternative to metal lath for one-coat stucco applications up to 1/2" thick. PermaLath 1000 has been developed for use in stucco applications 1/2" to 7/8" and as a plaster base for precast stone veneer.

PermaLath has enjoyed wide market acceptance, including major distributors and applicators.

For more information contact:

Kent Stumpe
BASF Wall Systems
Tel: 904-996-6145
E-Mail: kent.stumpe@basf.com

BASF Construction Chemicals, LLC
Wall Systems
3550 St. Johns Bluff Road, South
Jacksonville, FL 32224
Phone : 904-996-6000
<http://www.wallsystems.basf.com>

“When compared to conventional metal lath and other metallic reinforcing products, contractors are impressed by its ease of handling compared to traditional lath,” said Ashley Feit, BASF Marketing Manager for PermaLath. “Each roll can cover 487.5 square feet (54.2 square yards), yet weighs only 31 pounds, replacing 27 pieces (2.7 bundles) of 2.5 lath or 3.4 lath weighing 135 or 184 pounds respectively. It cuts easily with scissors or a utility knife, and you do not have the jagged edges of metal lath that can lead to injuries. Since the lath is non-metallic, it will not rust or corrode, a characteristic that makes it ideal for coastal applications. For this and other reasons, PermaLath is gaining the favor of the specifier community, and the building code recognition of PermaLath and PermaLath 1000 can only further enhance product acceptance in the marketplace.”

A copy of the evaluation report is attached. It is also available online at www.icc-es.org (Click on ‘Evaluation Reports’ on the left. In the yellow box, select the link to search for a specific report, then enter the report number and click ‘Search’. Scroll down until you see the report, and click on the report number to open it).

BASF - The Chemical Company. We don't make a lot of the products you buy. We make a lot of the products you buy better.®

BASF Wall Systems is comprised of the Senergy, Finestone, SonoWall and Acrocrete brands. These brands' roots in the exterior wall systems market date back nearly 30 years. Over that time we have established ourselves as a leader in EIFS, stucco and textured acrylic surfacing systems for new construction and building renovation. Each brand offers the construction team up to 15 unique wall systems that provide the “stucco look” or can be finished to replicate more exotic minerals or metal panels. Our systems protect and beautify the exteriors of all types of commercial buildings and thousands of single and multi family residences. BASF Wall System's products are available through over 250 building materials suppliers from coast to coast in the US and Canada.

For more information about BASF Wall Systems, please visit www.wallsystems.basf.com or call us: 1-800-221-9255.

BASF Corporation, headquartered in Florham Park, New Jersey, is the North American affiliate of BASF SE, Ludwigshafen, Germany. BASF has more than 15,000 employees in North America, and had sales of approximately \$16.4 billion in 2007. For more information about BASF's North American operations, or to sign up to receive news releases by e-mail, visit www.basf.com/usa.

BASF is the world's leading chemical company: The Chemical Company. Its portfolio ranges from oil and gas to chemicals, plastics, performance products, agricultural products and fine chemicals. As a reliable partner, BASF helps its customers in virtually all industries to be more successful. With its high-value products and intelligent solutions, BASF plays an important role in finding answers to global challenges, such as climate protection, energy efficiency,

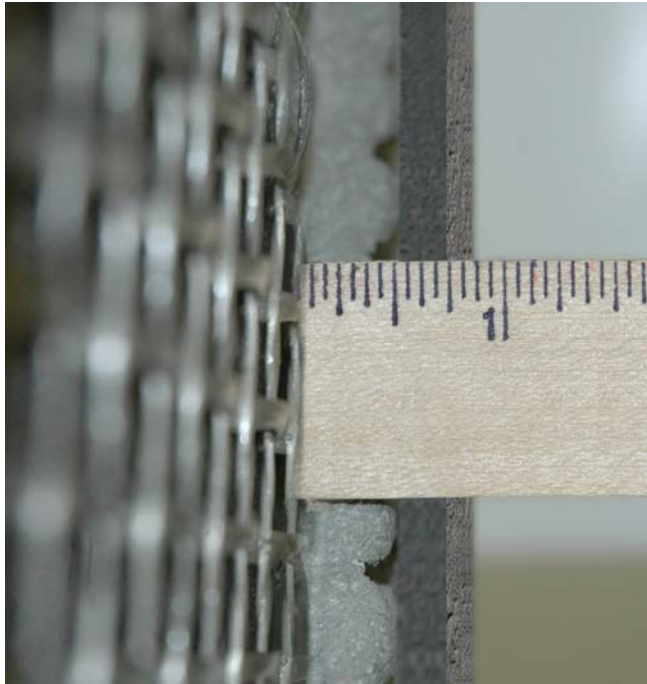
nutrition and mobility. BASF has more than 95,000 employees and posted sales of almost €58 billion in 2007. BASF shares are traded on the stock exchanges in Frankfurt (BAS), London (BFA) and Zurich (AN). Further information on BASF is available on the Internet at www.basf.com.



(Caption) PermaLath 1000 application – cutting pieces with scissors or utility knife.



(Caption) – Easy to handle; this worker is carrying the equivalent of 108 square yards of metal lath



(Caption) PermaLath 1000 is designed for use in stucco applications 1/2" to 7/8" and as a plaster base for precast stone veneer.



(Caption) Self – furring fiberglass composition will not corrode